

MATCH LETTER OR NUMBER WITH PRINT

DATE: 09/21/2018

MODEL: SC8524TA2

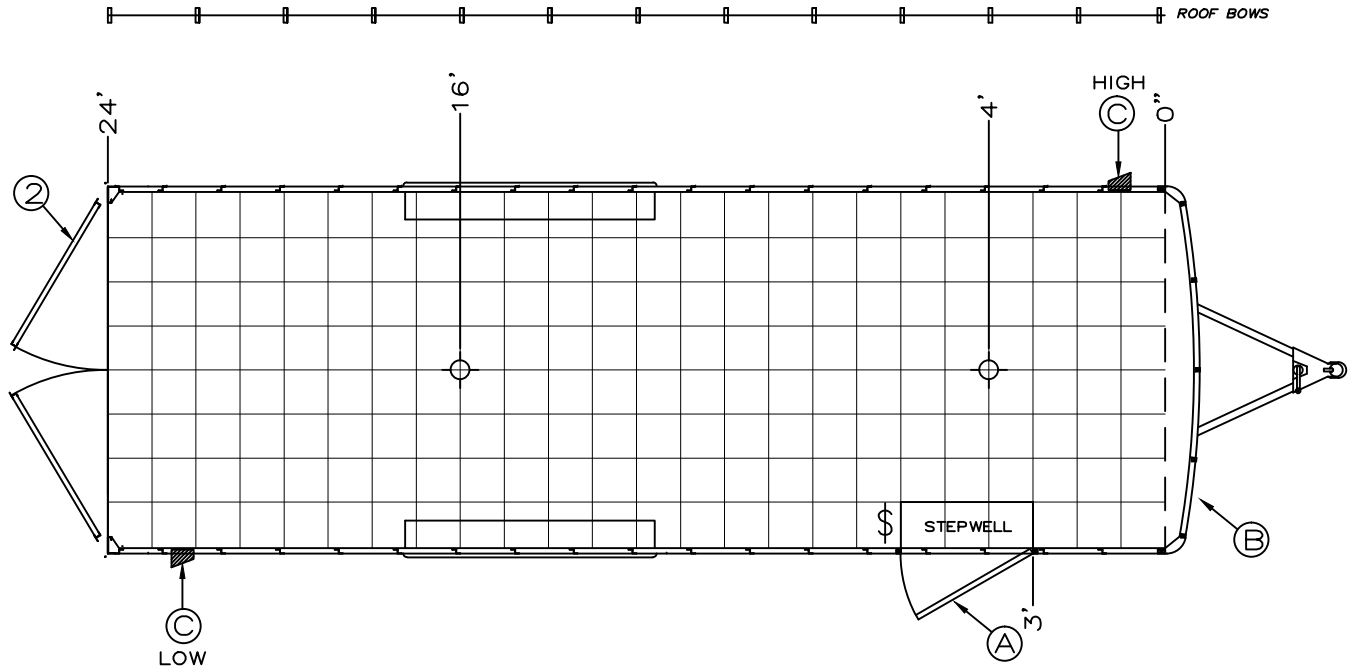
ORDER NUMBER: 000000

DEALER: BRAVO STOCK


PG: 1 OF 1

1 .030 ALUM. EXTERIOR
2 DOUBLE REAR DOORS

A 1-36" SIDE DOOR
B 24" ATP STONEGUARD
C 2-FLOW THRU SIDEWALL
VENTS



KEY: :

| | | | | |
|---|--|--|---|---|
| 12 VOLT ELECTRICAL | 110 VOLT ELECTRICAL | ROOF VENTS | X - D RING E - E TRACK | REVISION: _____ |
| <ul style="list-style-type: none"> ○ - STANDARD LED DOME LIGHT ⊕ - 4" ROUND LED DOME LIGHT ⌘ - WALL SWITCH | <ul style="list-style-type: none"> ▭ - PANEL W/ LIFELINE & CABLE HATCH △ - MOTOR BASE PLUG ⌘ - 2 BULB FLUORESCENT ⌘ - 1 BULB FLUORESCENT | <ul style="list-style-type: none"> ⊙ - QUARTZ LIGHT ⌘ - WALL SWITCH ○ - 15 AMP RECEPT ● - 20 AMP RECEPT ⊙ - GFI RECEPT | <ul style="list-style-type: none"> N/P | APPROVED: _____ |
| | | <ul style="list-style-type: none"> N/P = NON POWERED 12v = 12 VOLT POWERED 110v = 110 VOLT POWERED A/C = AIR CONDITIONER W/F = WIRE & FRAME | <ul style="list-style-type: none"> ⊗ - ATP (T/C) - TIRE COMPARTMENT |  <p>19319 COUNTY ROAD 8, BRISTOL IN 46507 PHONE: 574.848.7500 - FAX: 574.848.7550</p> <p>DRAWN BY: XXXXX</p> |