

MATCH LETTER OR NUMBER WITH PRINT

DATE: 10/28/2019

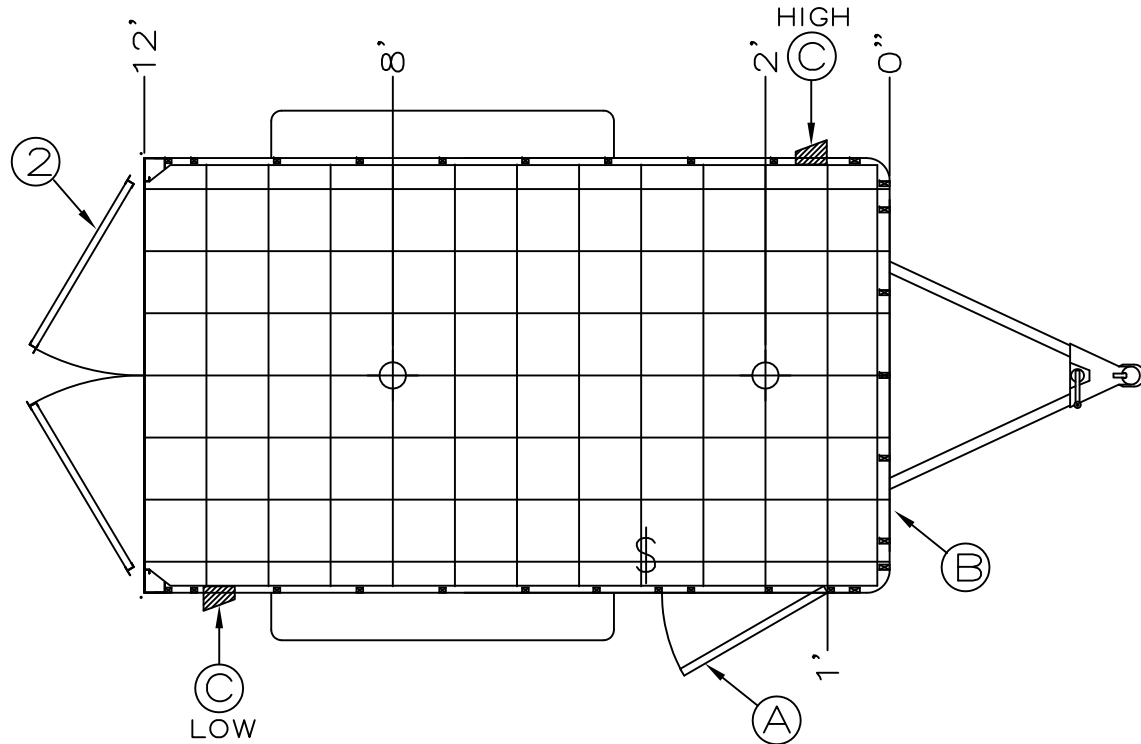
MODEL: SSAC712TA2

ORDER NUMBER: 000000


DEALER: BRAVO STOCK PG: 1 OF 1

1 .030 ALUM. EXTERIOR W/CAP
2 DOUBLE REAR DOORS

A 1-32" SIDE DOOR
B 24" ATP STONEGUARD
C 2-FLOW THRU SIDEWALL VENTS



KEY: :

12 VOLT ELECTRICAL	110 VOLT ELECTRICAL	ROOF VENTS		REVISION: _____	
<ul style="list-style-type: none"> ⊙ - STANDARD LED DOME LIGHT ⊕ - 4" ROUND LED DOME LIGHT ⌘ - WALL SWITCH 	<ul style="list-style-type: none"> ▭ - PANEL W/ LIFELINE & CABLE HATCH △ - MOTOR BASE PLUG ▭▭ - 2 BULB FLUORESCENT ▭ - 1 BULB FLUORESCENT 	<ul style="list-style-type: none"> ⊙ - QUARTZ LIGHT ⌘ - WALL SWITCH ⊙ - 15 AMP RECEPT ● - 20 AMP RECEPT ⌘ - GFI RECEPT 	<ul style="list-style-type: none"> N/P N/P = NON POWERED 12v = 12 VOLT POWERED 110v = 110 VOLT POWERED A/C = AIR CONDITIONER W/F = WIRE & FRAME 	<ul style="list-style-type: none"> ⊗ - D RING E - E TRACK ▨ - ATP ⊙ - TIRE COMPARTMENT 	<p>APPROVED: _____</p>  <p>19319 COUNTY ROAD 8, BRISTOL IN 46507 PHONE: 574.848.7500 - FAX: 574.848.7550</p> <p>DRAWN BY: XXXXX</p>